

# Franklin Lakes Public Schools

PARCC Data Report

March 8, 2016

Dr. Lydia E. Furnari



# New Jersey's statewide Assessment Program

In 2015, New Jersey adopted the Partnership for Assessment of Readiness for College and Careers (PARCC) to replace HSPA and NJ ASK in the elementary and middle school in language arts and mathematics.

- ◆ FLPS students took PARCC English Language Arts and Literacy Assessments (ELA/L) in grades 3 – 8.
- ◆ FLPS students took PARCC Mathematics Assessments in grades 3 – 8. Some middle school students took High School Level Assessments in Algebra I, Geometry, and Algebra II.

# Preliminary Data

- ◆ In December 2015, Preliminary PARCC data was presented
- ◆ Parent Information sessions were conducted at each of our four schools about score reporting and interpreting Individual Student Reports (ISRs)
- ◆ Reports were sent home to parents of students who took the assessments. Parents whose child did not take the assessment were sent sample ISRs for informational purposes

# PARCC Performance levels

PARCC uses five performance levels that delineate the knowledge, skills, and practices students are able to demonstrate:

**Level 1:**  
Did Not Yet  
Meet  
Expectations

**Level 2:**  
Partially Met  
Expectations

**Level 3:**  
**Approached  
Expectations**

**Level 4:**  
Met  
Expectations

**Level 5:**  
Exceeded  
Expectations

College & Career Readiness track

# FRANKLIN LAKES

## 2015 PARCC GRADE-LEVEL Outcomes

### English Language Arts

	Count of Valid Test Scores	% Did Not Yet Meet (Level 1)	% Partially Met (Level 2)	% Approached (Level 3)	% Met (Level 4)	% Exceeded (Level 5)	% District $\geq$ Level 4	% NJ $\geq$ Level 4	% PARCC $\geq$ Level 4
Grade 3	106	5	10	21	56	8	64%	44	38
Grade 4	135	1	1	12	48	38	86%	51	42
Grade 5	129	2	2	10	62	24	86%	52	40
Grade 6	127	2	9	14	46	28	74%	49	39
Grade 7	69	3	7	14	28	48	76%	52	42
Grade 8	94	1	7	7	45	39	84%	52	42

College & Career  
Readiness track

# FRANKLIN LAKES

## 2015 PARCC GRADE-LEVEL Outcomes

### MATHEMATICS

	Count of Valid Test Scores	% Did Not Yet Meet (Level 1)	% Partially Met (Level 2)	% Approached (Level 3)	% Met (Level 4)	% Exceeded (Level 5)	% District $\geq$ Level 4	% NJ $\geq$ Level 4	% PARCC $\geq$ Level 4	
Grade 3	106	1	13	20	52	14	66%	45	38	
Grade 4	138	2	7	20	59	12	71%	41	32	
Grade 5	129	2	6	19	58	15	73%	41	32	
Grade 6	129	7	6	24	44	19	63%	41	32	
Grade 7*	58	3	12	26	55	3	58%	37	29	
Grade 8*	37	5	16	46	32	0	32%	24	27	
Algebra I (Gr. 7 & 8)	54	0	0	9	83	7	90%	36	31	
Geom. (Gr. 8)	11	Data Suppressed to protect student privacy							22	27
Algebra II (Gr. 8)	1	Data Suppressed to protect student privacy							24	21

College & Career  
Readiness track

# Points of Comparison

- ◆ FLOW Districts – Average of all FLOW data by grade and subject area
- ◆ Benchmark Districts – Average of 30 high performing (I&J) districts chosen as part of our District Goals process for data comparison purposes, by grade and subject area
- ◆ State – New Jersey average percentages by grade and subject area
- ◆ PARCC – Average of all state results released by PARCC by subject and grade
- ◆ Spring 2016 Baseline Data – No comparison to NJASK

# Benchmark Districts



*Alpine*

*Glen Rock*

*Ho Ho Kus*

*Oakland*

*Ridgewood Village*

*Saddle River*

*Upper Saddle River*

*Woodcliff Lake*

*Wyckoff*

*Haddonfield*

*Essex Fells*

*Millburn*

*North Caldwell*

*Tewksbury*

*Cranbury*

*Little Silver*

*Rumson, Rumson-*

*Fair Haven*

*Chatham*

*Chester*

*Harding Township*

*Mendham*

*Mendham Township*

*Mountain Lakes*

*Bedminster*

*Bernards Township*

*Montgomery*

*Township*

*Summit*

*Westfield*

*West Windsor-*

*Plainsboro*



# District Data Comparison

## English Language Arts

### Total Population

Spring 2015

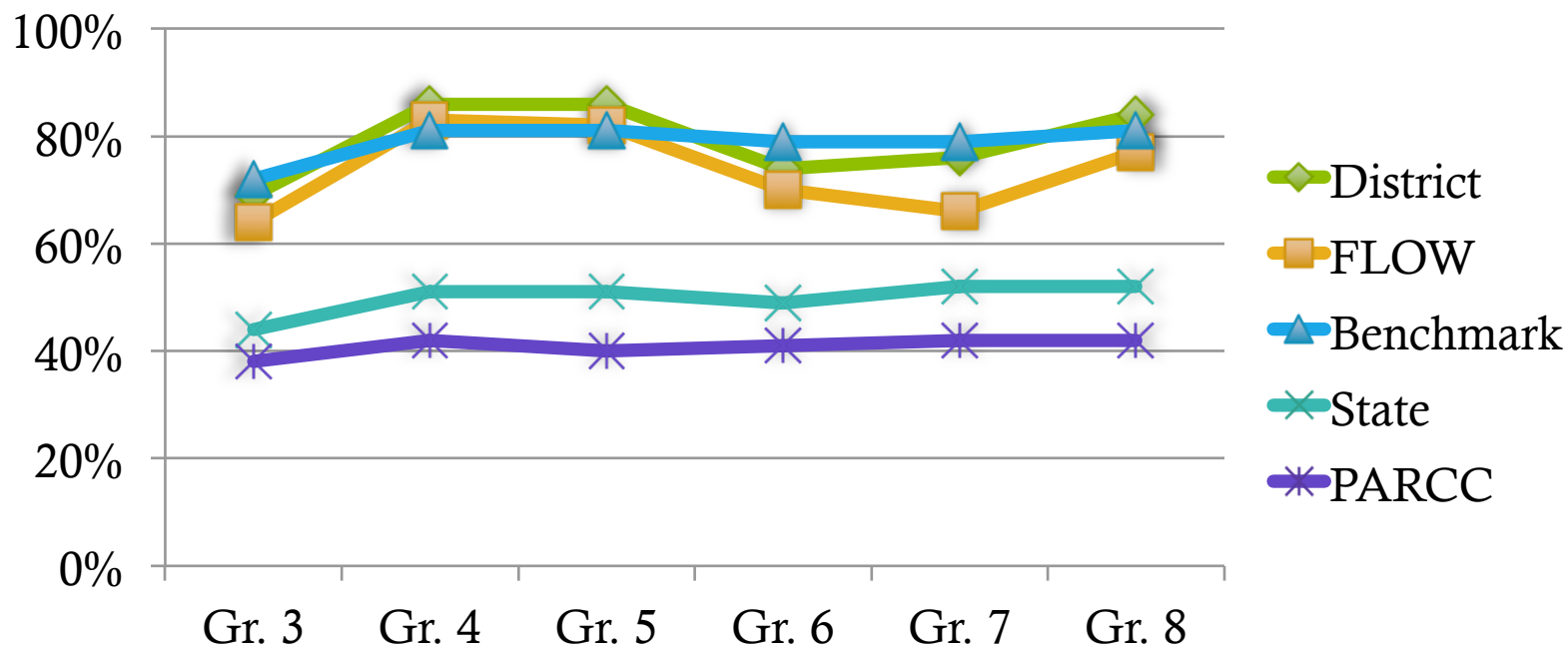
<b>ELA</b>	<b>District</b>	<b>FLOW Benchmark</b>	<b>State</b>	<b>PARCC</b>	
Gr. 3	69%	64%	72%	44%	38%
Gr. 4	86%	83%	81%	51%	42%
Gr. 5	86%	82%	81%	51%	40%
Gr. 6	74%	70%	79%	49%	41%
Gr. 7	76%	66%	79%	52%	42%
Gr. 8	84%	77%	81%	52%	42%

# District Data Comparison

## English Language Arts

### Total Population

Spring 2015



# District Data Comparison

## Mathematics

### Total Population

Spring 2015

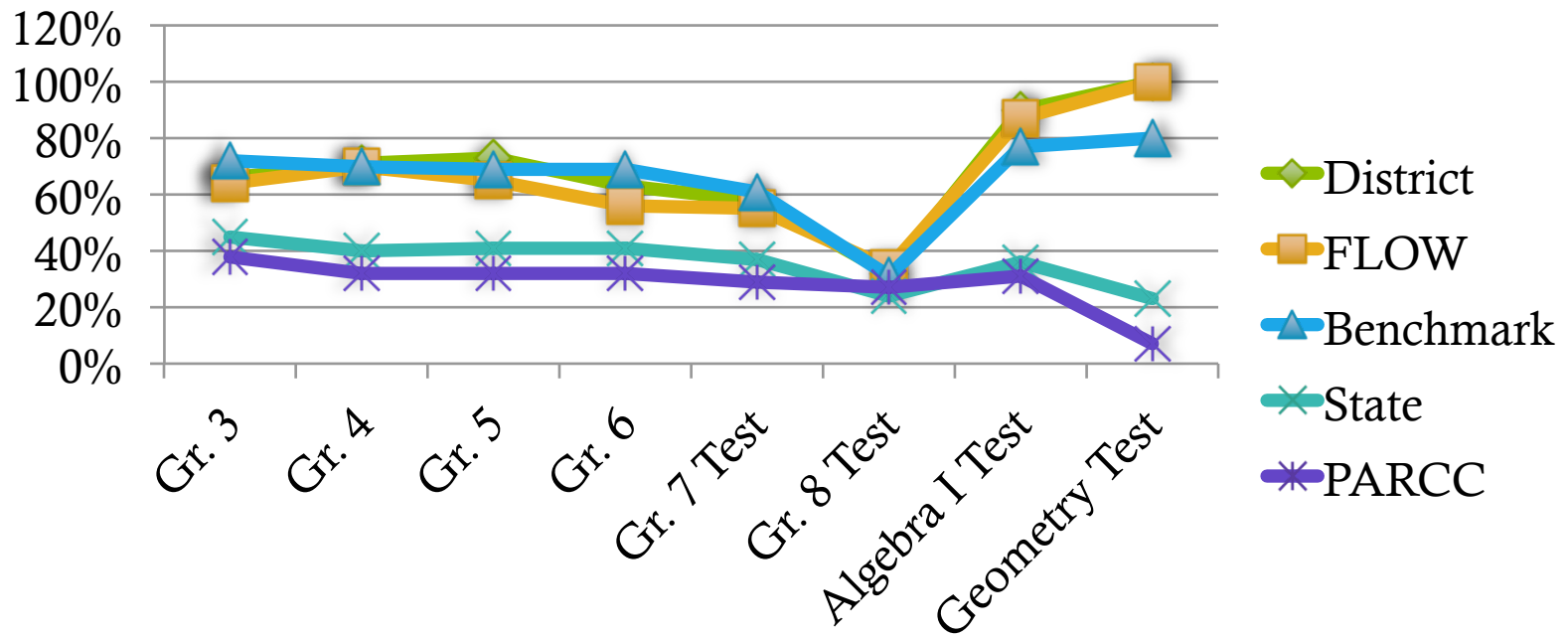
Math	District	FLOW	Benchmark	State	PARCC
Gr. 3	66%	64%	72%	45%	38%
Gr. 4	71%	70%	70%	40%	32%
Gr. 5	73%	65%	69%	41%	32%
Gr. 6	63%	56%	69%	41%	32%
Gr. 7	58%	55%	61%	37%	29%
Gr. 8	32%	34%	31%	24%	27%
Algebra I	90%*	87%*	77%	36%	31%
Geometry	100%*	100%*	80%	23%	7%

# District Data Comparison

## Total Population

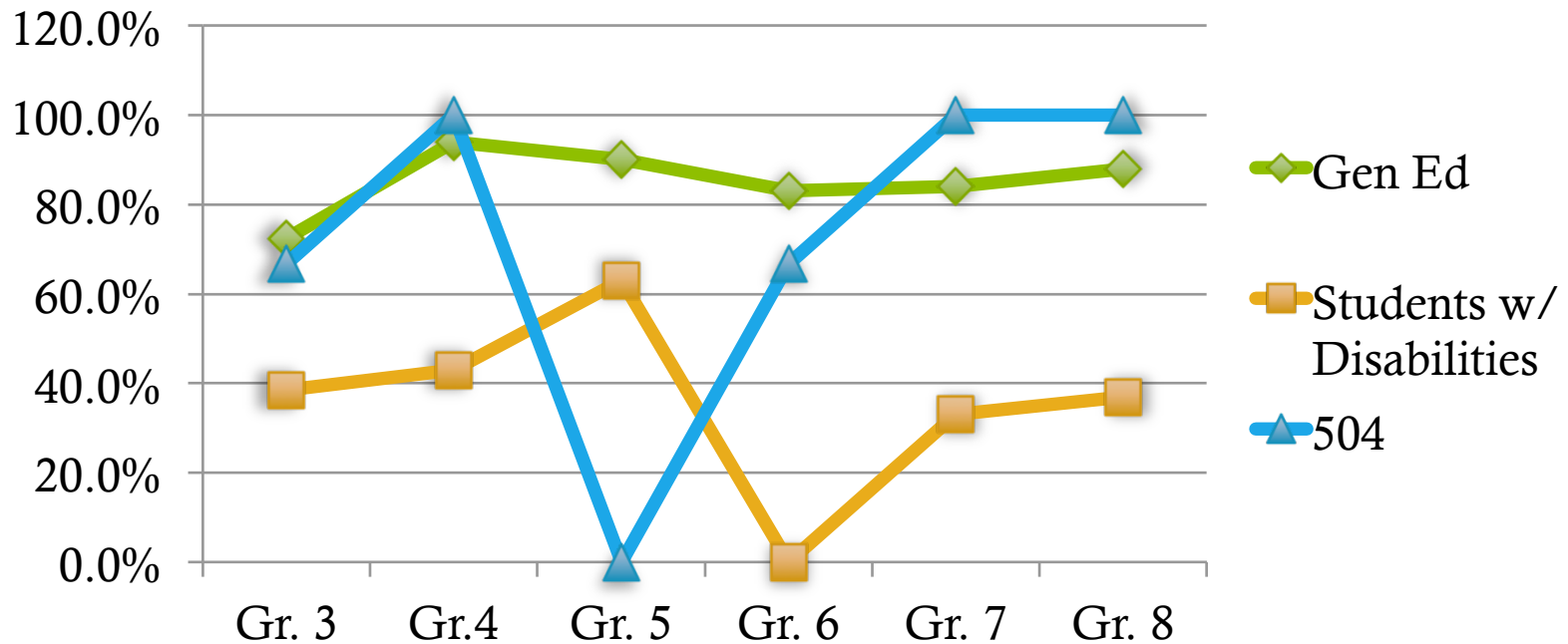
### Mathematics

Spring 2015



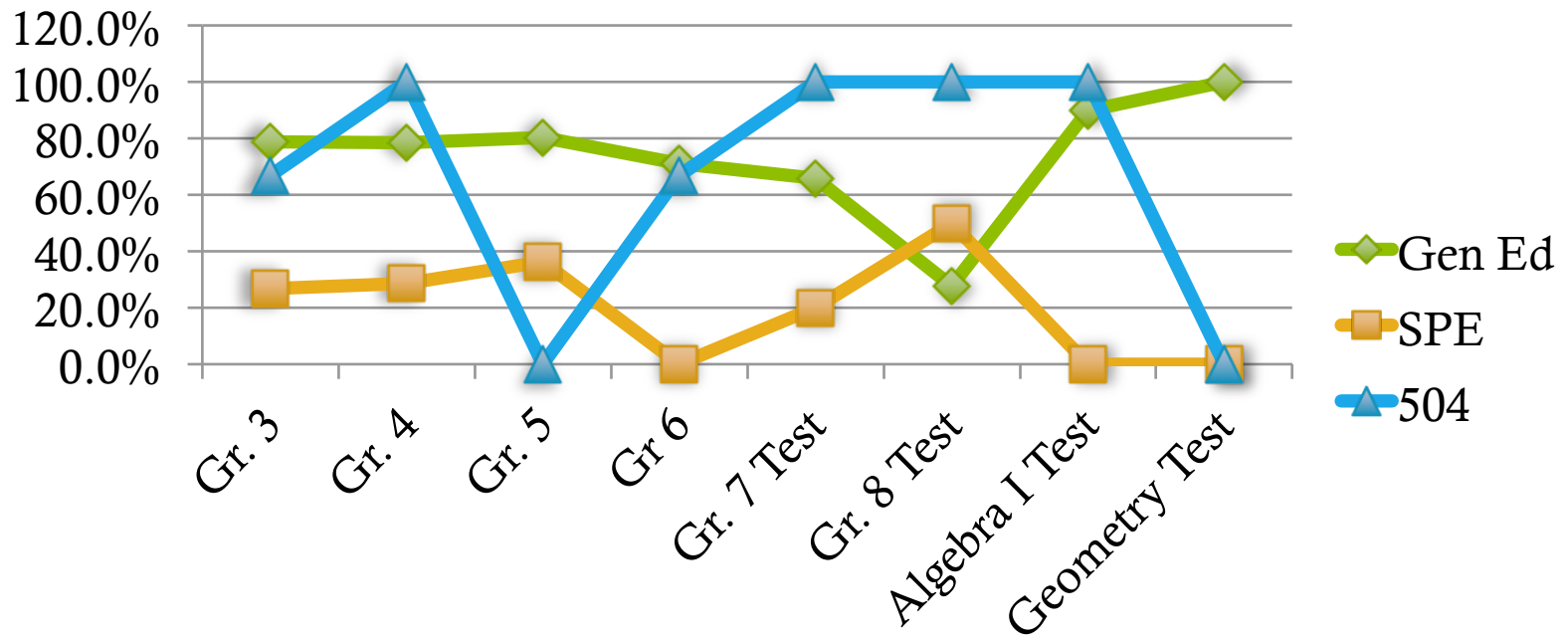
# Sub-Group Data Gen/SPE/504 English Language Arts

Spring 2015



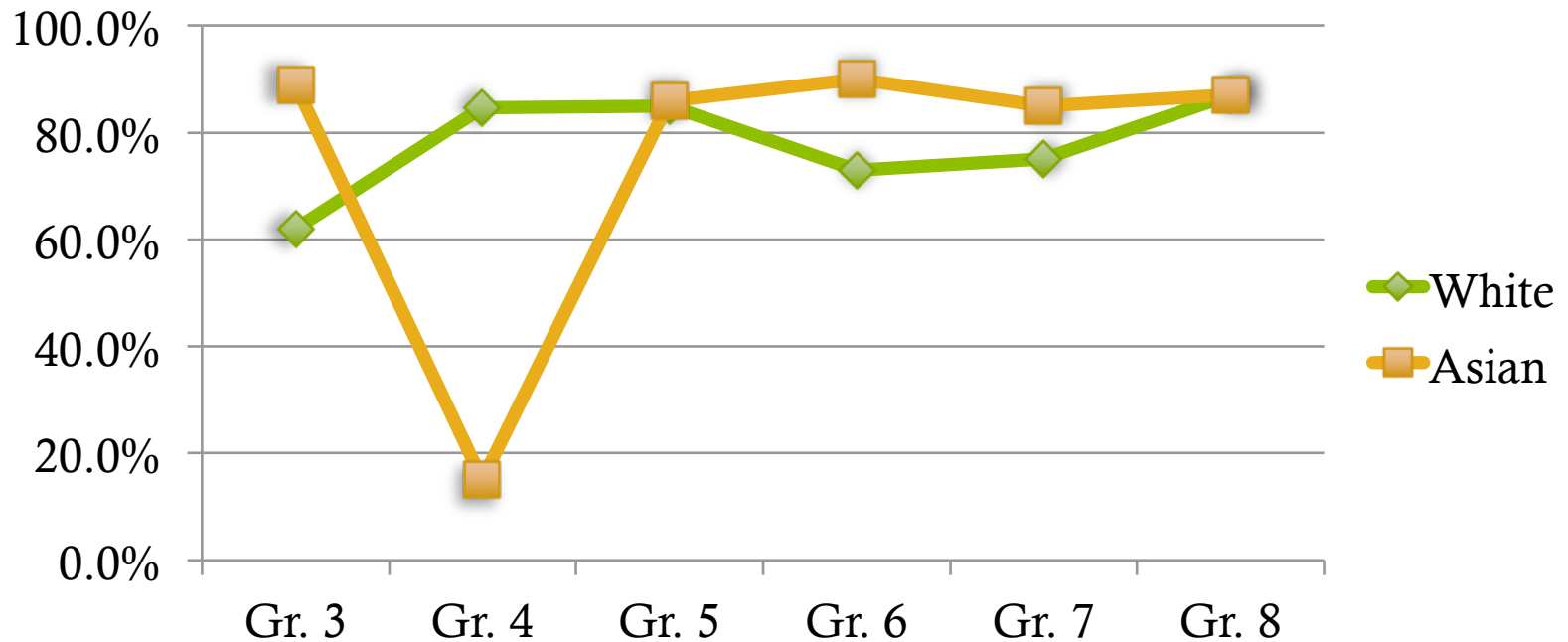
# Sub-Group Data Gen/SPE/504 Mathematics

Spring 2015



# Sub-Group Data Ethnicity English Language Arts

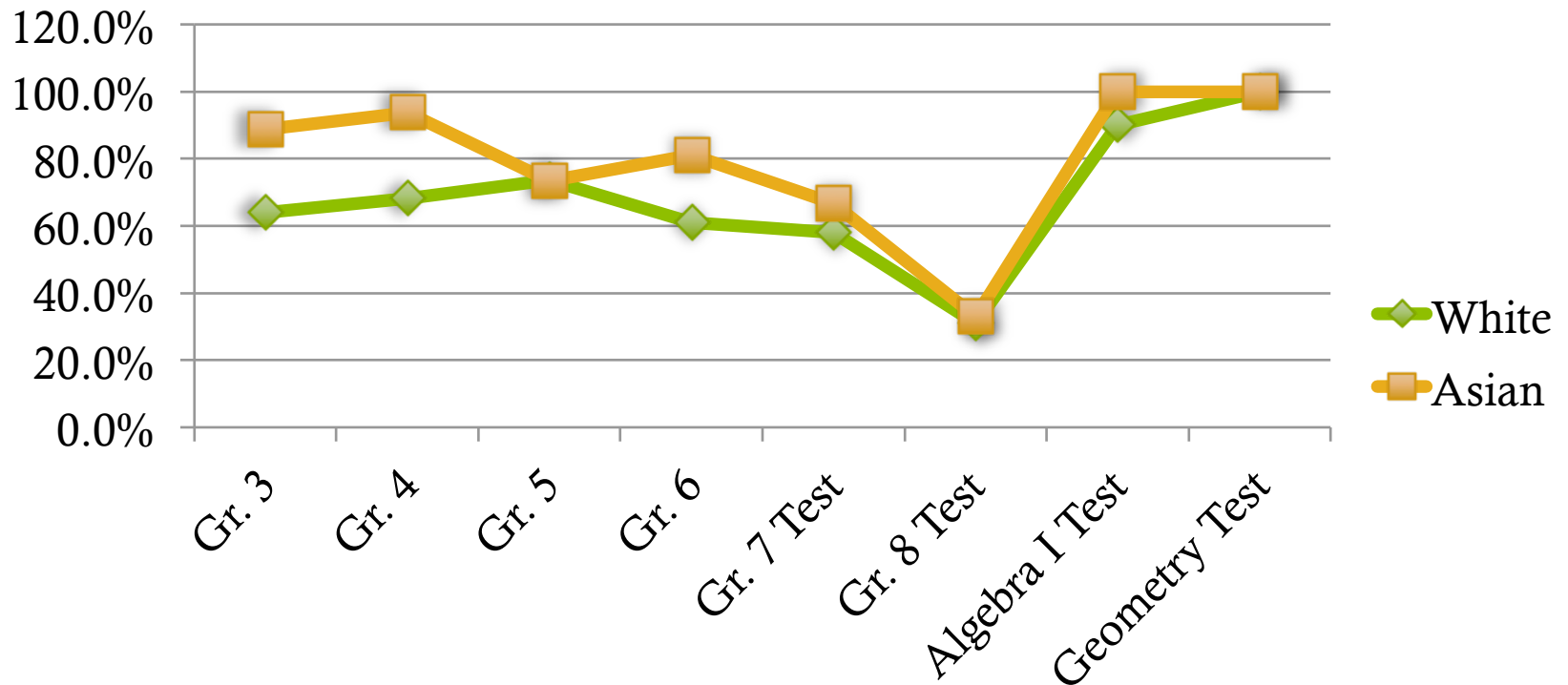
Spring 2015



# of test takers too small to report [Black/AA, Hispanic, Hawaiian]

# Sub-Group Data Ethnicity Mathematics

Spring 2015



# of test takers too small to report [Black/AA, Hispanic, Hawaiian]



# What Is the Data Used For?

- ◆ Spring 2015 data is analyzed by teachers and administrators to learn more about the assessment, and about the strength of our curriculum and instructional design in ELA and Math in grades 3-8.
- ◆ Spring 2015 data has not nor will it be used for student placement into programs.
- ◆ Spring 2016 data, once received and analyzed may inform placement decisions, but a final decision has not been made yet.

# Questions?

💧 Questions?



Thank you